



Situação e implantação (1930). Mapa base: SARA BRASIL.
 Location and site plan (1930). Base map: SARA BRASIL.

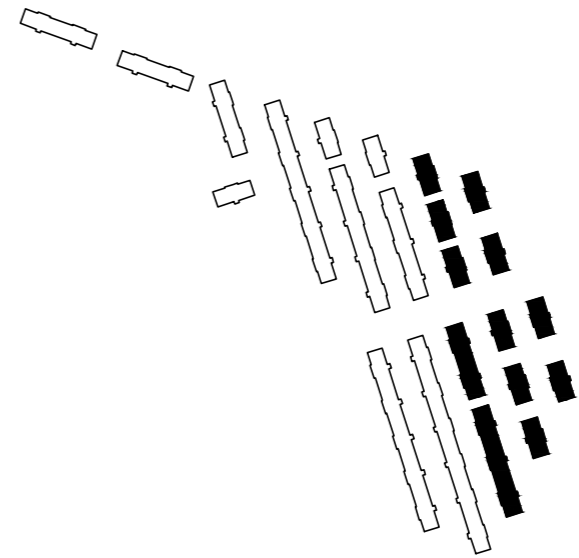


Situação e implantação (1952-59). Mapa base: VASP.
 Location and site plan (1952-59). Base map: VASP.



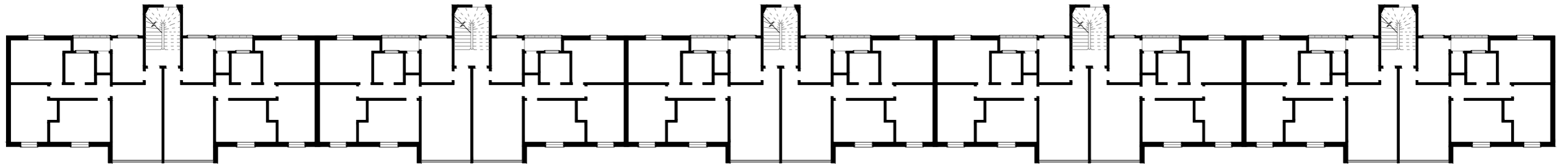
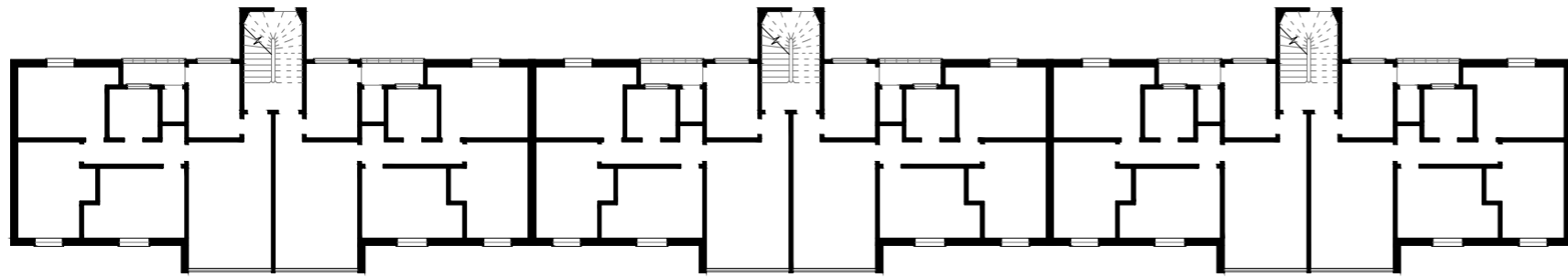
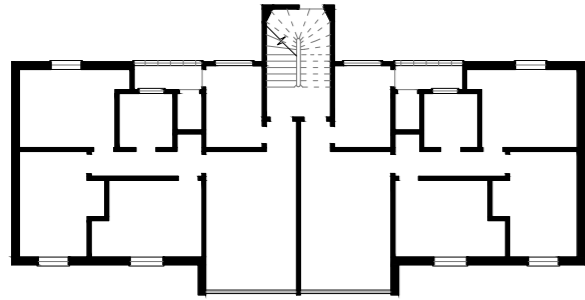


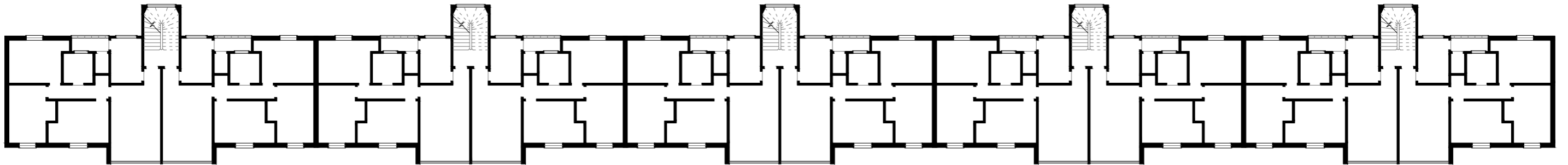
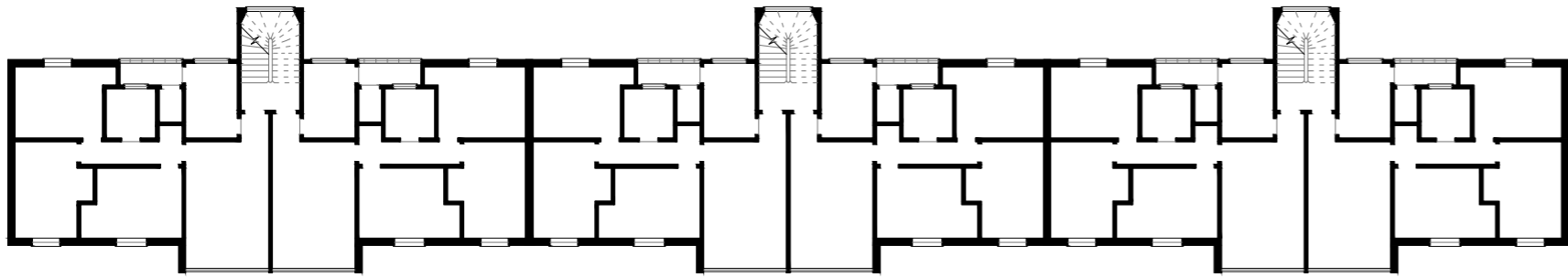
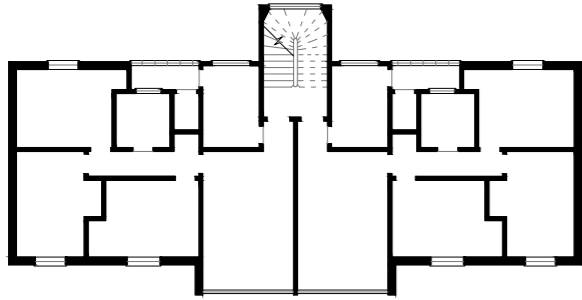
Situação e implantação (2005-06). Mapa base: Mapa Digital da Cidade (MDC).
 Location and site plan (2005-06). Base map: Mapa Digital da Cidade (MDC).

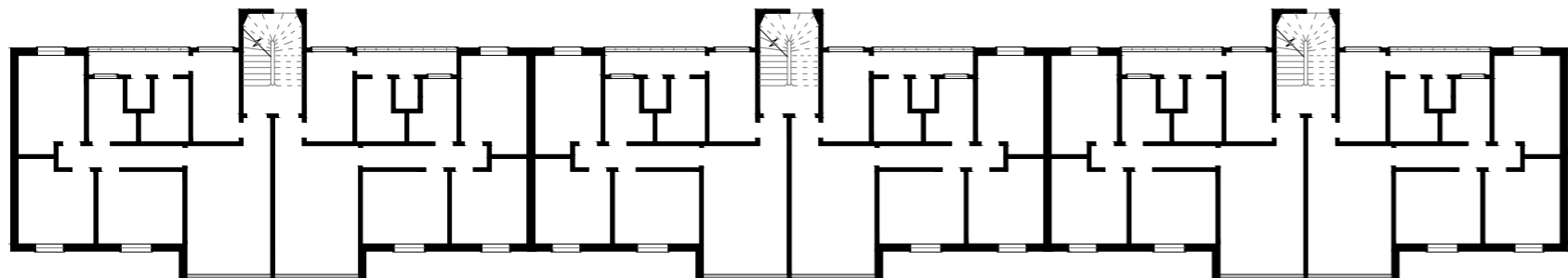
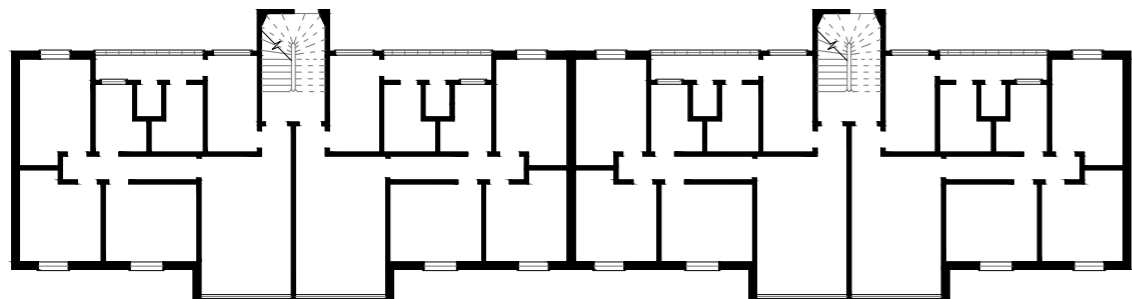
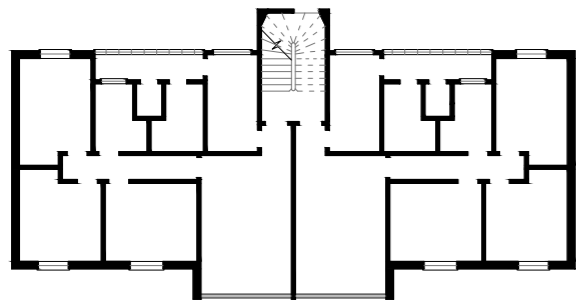


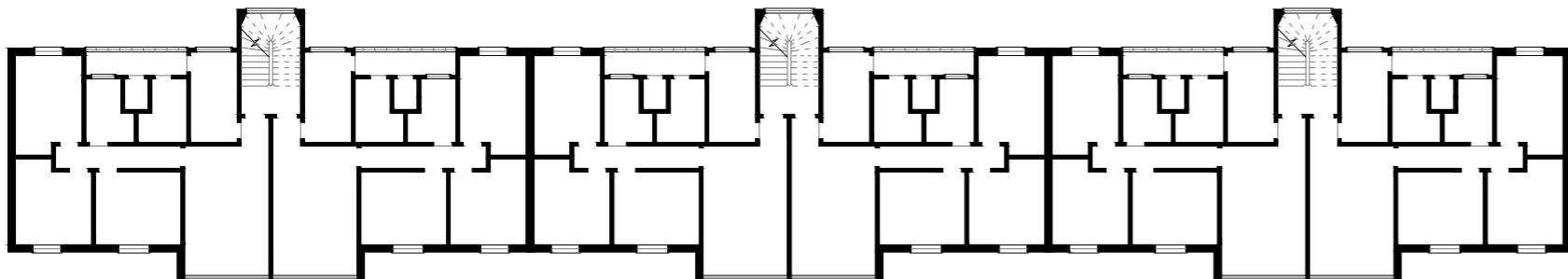
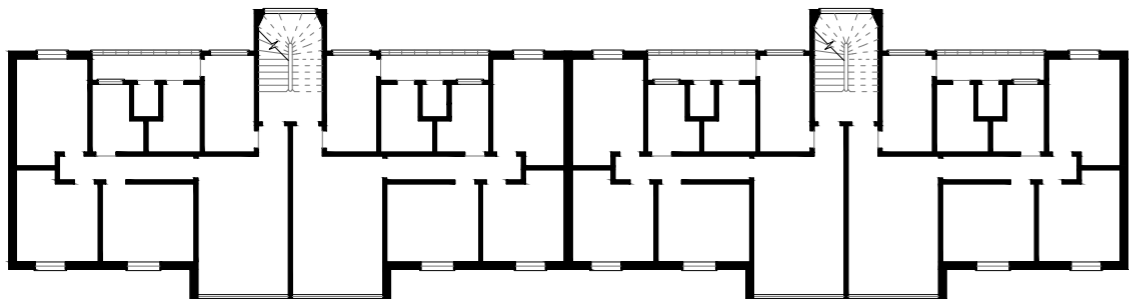
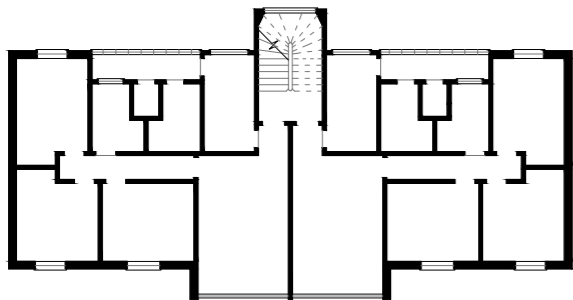
Edifícios do módulo 1 (branco) e edifícios do módulo 2 (preto).
 Module 1 buildings (white) and module 2 buildings (black).





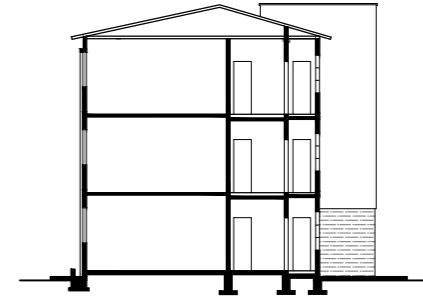








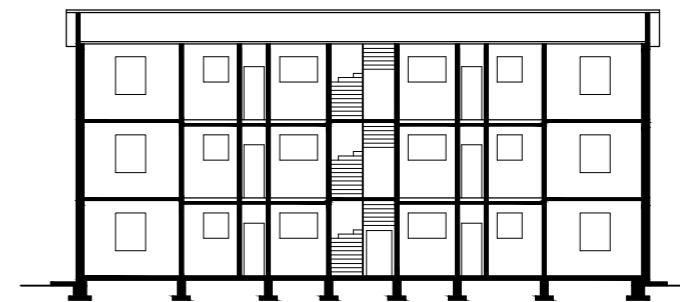
Elevação Leste
East elevation



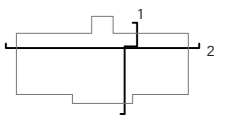
Corte 1
Section 1



Elevação Oeste
West elevation

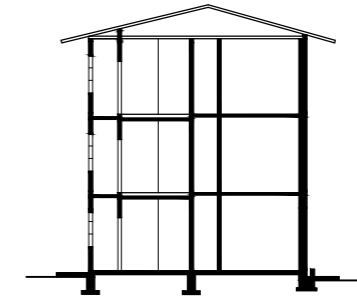


Corte 2
Section 2





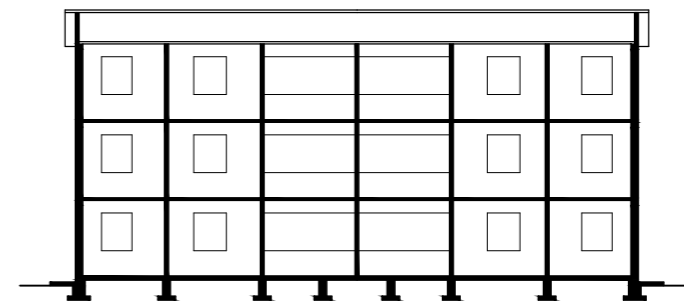
Elevação Leste
East elevation



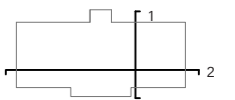
Corte 1
Section 1



Elevação Oeste
West elevation



Corte 2
Section 2





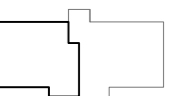
- 1 sala
- 2 cozinha
- 3 banheiro
- 4 dormitório
- 5 lavanderia

- 1 living room
- 2 kitchen
- 3 bathroom
- 4 bedroom
- 5 laundry room



- 1 sala
- 2 cozinha
- 3 banheiro
- 4 dormitório
- 5 lavanderia
- 6 despensa

- 1 living room
- 2 kitchen
- 3 bathroom
- 4 bedroom
- 5 laundry room
- 6 storeroom



Edifício do módulo 1. Unidade habitacional. Tipo A - Três dormitórios, sem despensa. Planta Tipo.
Module 1 building. Housing unit. Type A - Three bedrooms, without storeroom. Typical Floor.

Edifício do módulo 2. Unidade habitacional. Tipo B - Três dormitórios, com despensa. Planta Tipo.
Module 2 building. Housing unit. Type B - Three bedrooms, with storeroom. Typical Floor.